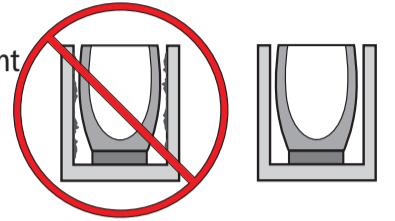


1 INSPECT CRUCIBLES WHEN RECEIVED.

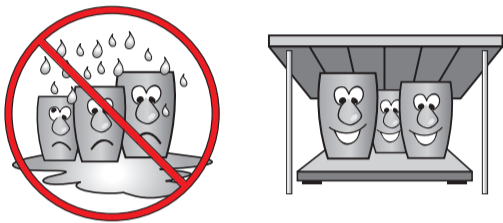


7 KEEP FURNACE LINING IN GOOD REPAIR.

The furnace lining must be in good repair, and as concentric as possible. This will stop flame deflection/impingement in flame-fired furnaces, and will assure proper melting in induction furnaces.



2 STORE IN A DRY PLACE.



8 CHARGE CRUCIBLES CAREFULLY.

Don't wedge.



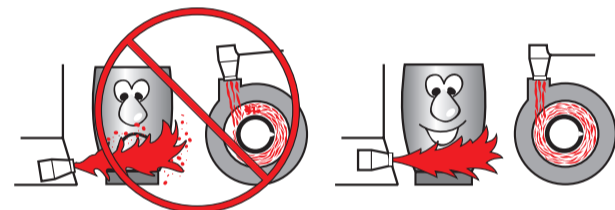
3 MOVE CRUCIBLES PROPERLY.

Do not roll or shimmy. Use a hand cart.



9 USE SLIGHTLY OXIDIZING FLAME.

Don't let flame impinge directly on crucible. Centre line of burner should be at juncture of crucible and base block.



4 USE THE PROPER PEDESTAL.

Same material - right size.



10 CRUCIBLE SHANKS MUST FIT PROPERLY.

They must support the crucible bottom at all times.



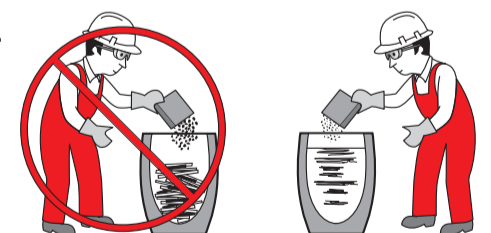
5 NEVER WEDGE THE CRUCIBLE.

Let crucible expand and contract.



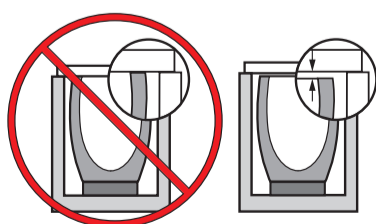
11 USE FLUXES ACCORDING TO MANUFACTURERS INSTRUCTIONS.

Add to molten metal if possible.



6 AVOID TOP SMOTHERING.

The furnace cover or lid should not rest on the top crucible wall. In electric resistance furnaces, the fibre blanket should not be fully compressed on the top of the crucible.



12 KEEP YOU CRUCIBLE CLEAN.

Remove dross build-up carefully while the crucible is hot.

